

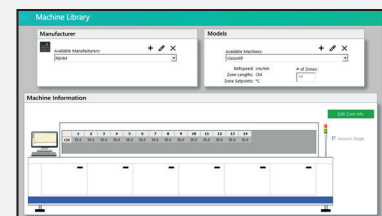
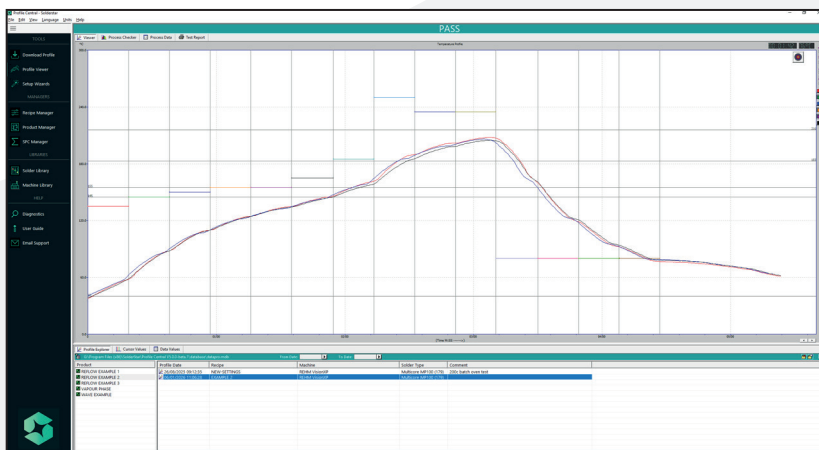
- ◆ 12 measurement channels
- ◆ +/- 0.5C Accuracy
- ◆ Standard type-K inputs
- ◆ User replaceable safe NiMH battery
- ◆ 12 profile memories
- ◆ High thermal protection
- ◆ Compact datalogger + thermal shield
- ◆ High speed USB or 2.4Ghz Wireless
- ◆ Automatic sensor detection/testing

Advanced Reflow Profiler with 12 measurement channels

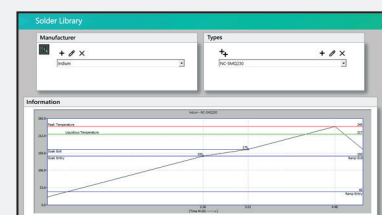
The package includes an ultra-compact datalogger featuring the unique 'SmartLink' connector system, combined with a heatshield and thermocouple adapter to provide twelve measurement channels.

Engineered for the most advanced electronic PCB assemblies, the 12-channel system delivers maximum profiling capability for highly complex, high-density and multi-layer products where extensive thermal monitoring is essential. Ideal for applications incorporating large BGAs, CSPs, PoP devices and other thermally sensitive components, the system enables multiple measurement points across critical areas of the assembly to ensure complete process visibility and accurate thermal characterisation.

The increased channel capacity allows simultaneous monitoring of component joints, board surfaces and shadowed areas where temperature variation can significantly impact solder quality and long-term reliability. Despite the enhanced measurement capability, the system maintains a compact and production-friendly form factor suitable for modern reflow processes.



Data libraries for ovens and solder paste specifications



Powerful analysis and profile simulation tools

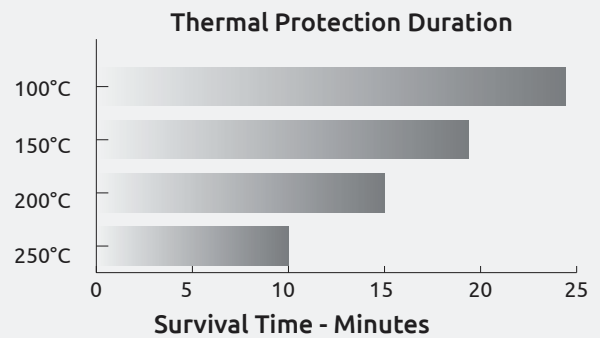
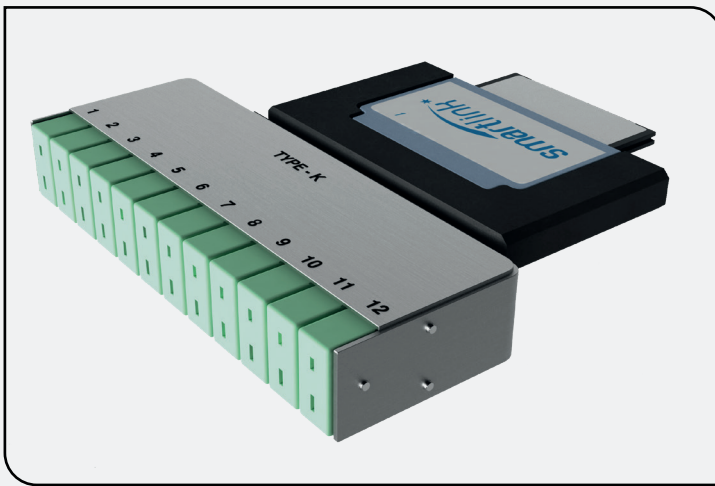
www.solderstar.com

SLX Datalogger Technical Specification

Size/Weight	126mm x 52mm x 9.5mm, 118g
Channels	Support for upto 12 - Type K
Temperature Memory	12 Memories, each with 25000 data points per measurement channel
Measurement Rate	0.05s to 60 seconds
Measurement Range	-125 to 1372°C (-257 to 2502 °F)
Measurement Accuracy	±0.5 °C (0.9°F)
Measurement Resolution	±0.05 °C (0.09°F)
Max. Internal Temperature	+85 °C (Auto Shutdown on over temp.)
Power	User replaceable, High Temperature NiMH
Communications	USB or optional 2.4Ghz Wireless
Input Type	Type K, EN 05842:1993, Class 1 / ANSI MC 96.1



Heatshield Technical Specification



Supplied Model	HS-SL2580-SL12
Material	Stainless Steel construction
Sensors	12 x Type-K standard socket inputs
Shield Size (L x W x H)	310mm x 104mm x 25mm

Wireless Telemetry Option

Frequency
2.4 Ghz Transceiver

Channels
128 Individual Channels



Software

Compatibility
Windows 7/8/10/11

Language Support
English, French, German, Italian, Portuguese, Spanish & Chinese

For more information contact your regional Solderstar office



Solderstar Ltd
Unit C2 - Castle Park Industrial Estate
Bower Street, Oldham, OL1 3LN
United Kingdom
+44 (0)1706 354846
info@solderstar.co.uk



Solderstar Ltd
4600 140th Avenue North, Suite 180
Clearwater, Florida 33762-3814
United States
+1 (727) 461 2270
info@solderstar.com



Solderstar / PhoenixTM GmbH
Löhner Str. 108
Löhne, D-32584
Germany
+49 5731 3002811
info@solderstar.de