



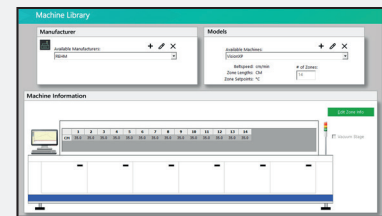
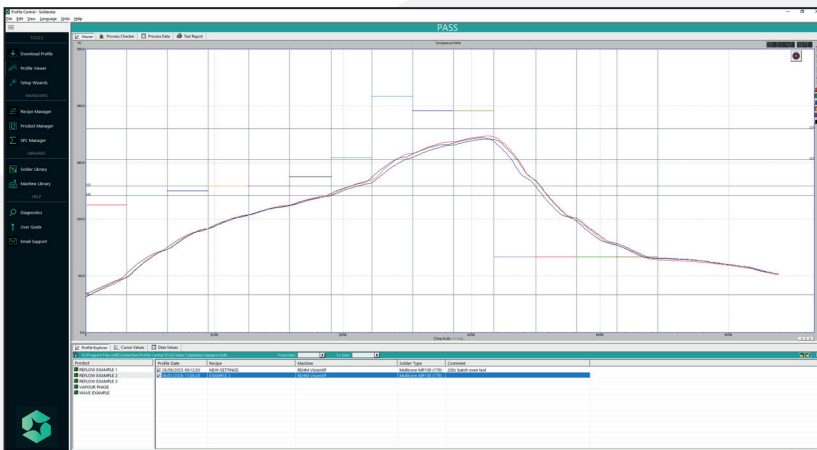
- ◆ 9 measurement channels
- ◆ +/- 0.5C Accuracy
- ◆ Standard type-K inputs
- ◆ User replaceable safe NiMH battery
- ◆ 12 profile memories
- ◆ High thermal protection
- ◆ Compact datalogger + thermal shield
- ◆ High speed USB or 2.4Ghz Wireless
- ◆ Automatic sensor detection/testing

## Compact Reflow Profiler with 9 measurement channels

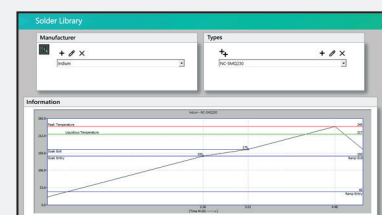
The package includes an ultra-compact datalogger featuring the unique 'SmartLink' connector system, combined with a heatshield and thermocouple adapter to provide nine measurement channels.

Developed for advanced and thermally demanding PCB assemblies, the 9-channel system delivers increased profiling capability for complex, high-density and multi-layer boards, enabling more detailed thermal analysis across critical components and locations. Despite the increased channel count, the system maintains the same compact width and proven form factor as the standard platform, allowing easy integration into production environments with tight process clearances.

A comprehensive software suite includes profile analysis, data management, profile simulation and integrated SPC charting tools. Powerful yet easy to use, the system is ideal for electronics manufacturers and EMS providers requiring enhanced thermal visibility, rapid profile setup and ongoing process verification for today's increasingly sophisticated PCB technologies.



## Data libraries for ovens and solder paste specifications



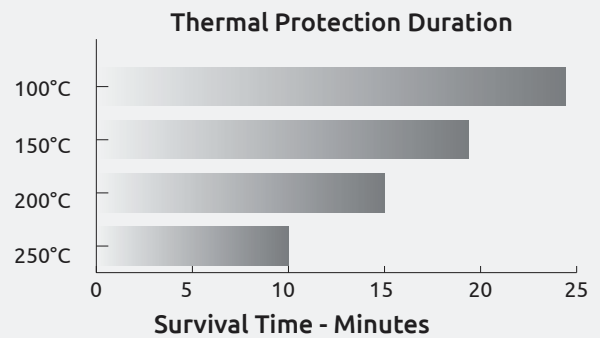
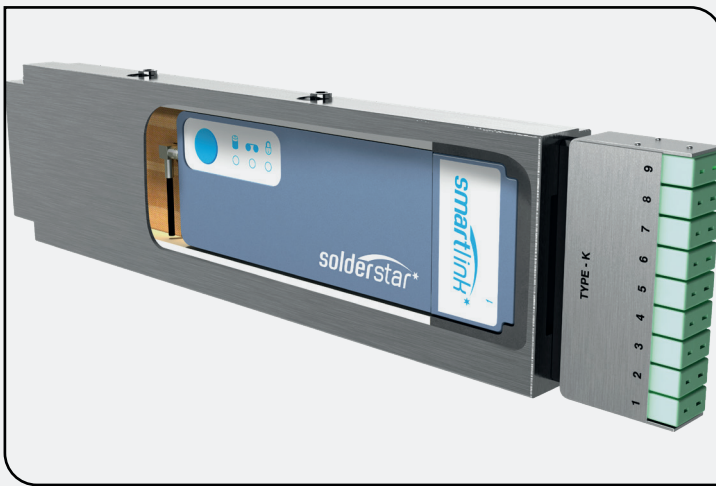
Powerful analysis and profile simulation tools

## SLX Datalogger Technical Specification

<b>Size/Weight</b>	126mm x 52mm x 9.5mm, 118g
<b>Channels</b>	Support for upto 12 - Type K
<b>Temperature Memory</b>	12 Memories, each with 25000 data points per measurement channel
<b>Measurement Rate</b>	0.05s to 60 seconds
<b>Measurement Range</b>	-125 to 1372°C (-257 to 2502 °F)
<b>Measurement Accuracy</b>	±0.5 °C (0.9°F)
<b>Measurement Resolution</b>	±0.05 °C (0.09°F)
<b>Max. Internal Temperature</b>	+85 °C (Auto Shutdown on over temp.)
<b>Power</b>	User replaceable, High Temperature NiMH
<b>Communications</b>	USB or optional 2.4Ghz Wireless
<b>Input Type</b>	Type K, EN 05842:1993, Class 1 / ANSI MC 96.1



## Heatshield Technical Specification



<b>Supplied Model</b>	HS-SL2580-SL9
<b>Material</b>	Stainless Steel construction
<b>Sensors</b>	9 x Type-K standard socket inputs
<b>Shield Size (L x W x H)</b>	310mm x 80mm x 25mm

## Wireless Telemetry Option

**Frequency**  
2.4 Ghz Transceiver

**Channels**  
128 Individual Channels



## Software

**Compatibility**  
Windows 7/8/10/11

**Language Support**  
English, French, German, Italian, Portuguese, Spanish & Chinese

## For more information contact your regional Solderstar office



Solderstar Ltd  
Unit C2 - Castle Park Industrial Estate  
Bower Street, Oldham, OL1 3LN  
United Kingdom  
+44 (0)1706 354846  
info@solderstar.co.uk



Solderstar Ltd  
4600 140th Avenue North, Suite 180  
Clearwater, Florida 33762-3814  
United States  
+1 (727) 461 2270  
info@solderstar.com



Solderstar / PhoenixTM GmbH  
Löhner Str. 108  
Löhne, D-32584  
Germany  
+49 5731 3002811  
info@solderstar.de